



Blanco Rd. to Orsinger Ln. Pressure Zone 1111 24-inch Water Main Project

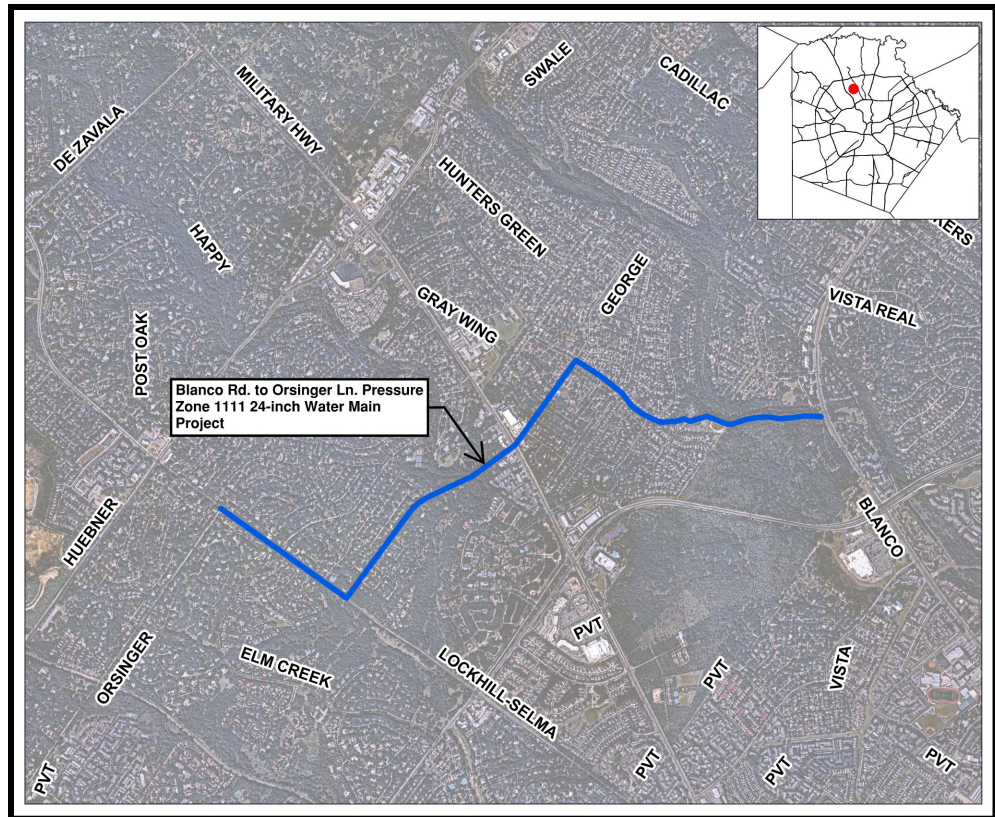
SAWS work includes the installation of approximately 2.6 miles of 24-inch diameter D.I. water main along Lockhill-Selma from Orsinger Rd. to George Rd., along George Rd. from Lockhill-Selma to Shady Walk Dr. drainage channel, and along the drainage channel through to the Phil Hardberger Park Conservancy and Voelcker Homestead. The project is required to improve transmission efficiency between the Bitters booster station and the DeZavala elevated tank.

When Will Work Occur?

Project Construction duration is anticipated to be approximately 24 months.

Construction Elements:

- ✓ A traffic control plan, which may include a combination of detours and lane closures will be reviewed and approved by City of San Antonio Right of Way Department.
- ✓ The project limits are located within residential areas, commercial areas, JUA'S, easements, and within San Antonio Parks property.
- ✓ The project will require open cut and bore construction methods that reach depths up to 18 feet. Bore construction will take place at the intersection of George Rd. and Lockhill-Selma, at the intersection of Fairfield Bend & the drainage channel, in the drainage channel behind Gable Village Dr, and as well as the intersection of George Rd. and NW Military. The contractor will need to excavate through rock in various areas within the project.
- ✓ Construction is along CoSA right of way.



For more information:

SAWS Public Relations:

Cecilia Picazo, 210-233-3750

Byron Gipson, 210-233-2977

